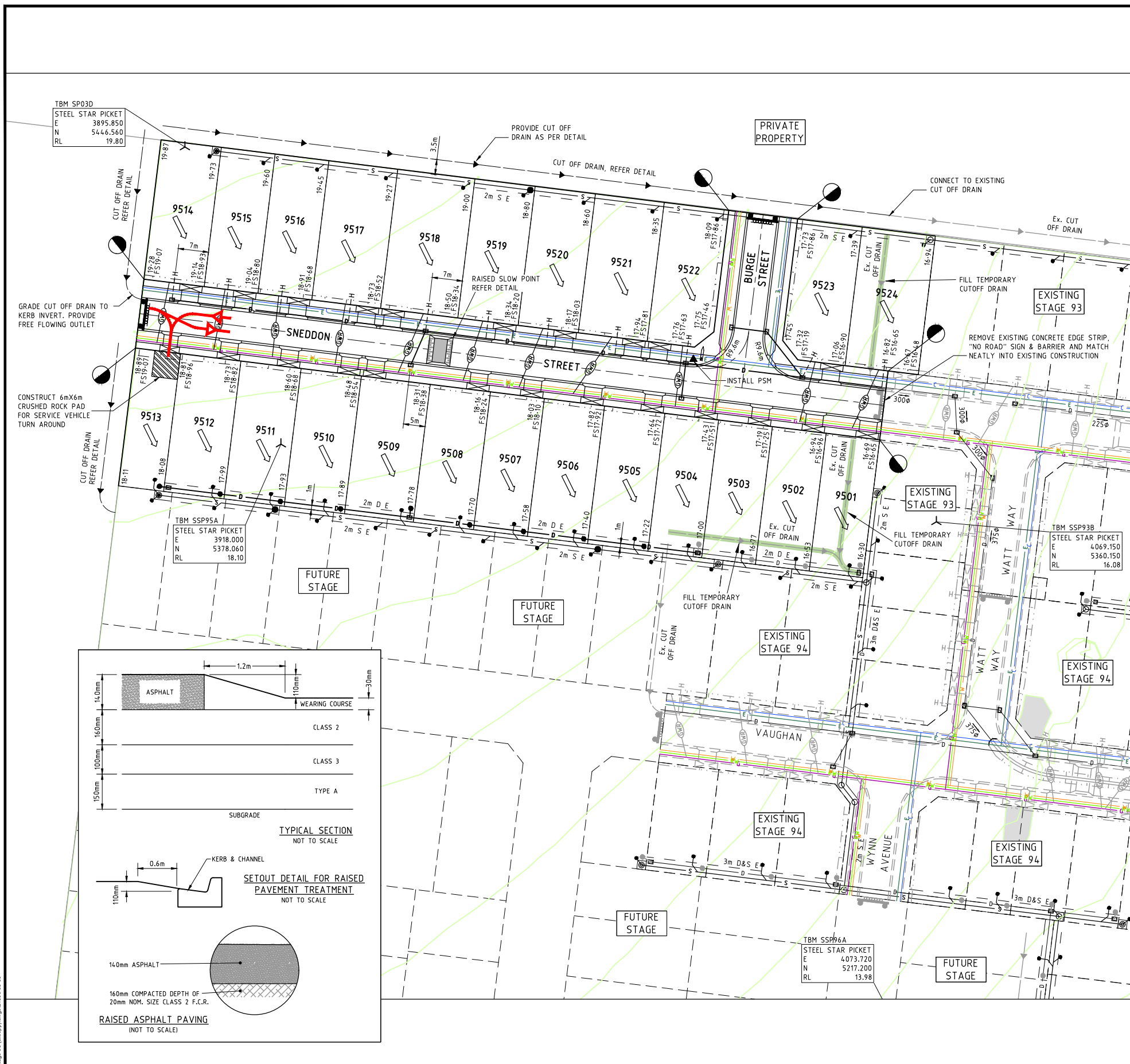


ROAD NAME	RESERVE WIDTH (m)	ROAD WIDTH (m)			KERB TYPE		VERGE WIDTH (m)	
		LIP to LIP	INV to INV	BACK to BACK	NTH/WEST	STH/EAST	NTH/WEST	STH/EAST
SNEDDON STREET	16.00	6.70	7.30	7.60	B2	B2	4.20	4.20
BURGE STREET	16.00	6.70	7.30	7.60	B2	B2	4.20	4.20

ROAD NAME	SERVICES OFFSET SCHEDULE									
	GAS		RECYCLED WATER		WATER		ELECTRICITY		COMMUNICATIONS	
	SIDE	OFFSET (m)	SIDE	OFFSET (m)	SIDE	OFFSET (m)	SIDE	OFFSET (m)	SIDE	OFFSET (m)
SNEDDON STREET	SOUTH	1.90	SOUTH	2.40	SOUTH	2.90	NORTH	2.60	NORTH	1.80
BURGE STREET	WEST	1.90	WEST	2.40	WEST	2.90	EAST	2.60	EAST	1.80



**CCTV INSPECTION OF DRAINAGE LINES** - ALL DRAINAGE LINES INCLUDING CURVED PIPELINES ARE TO BE INSPECTED VIA REMOTE CAMERA PRIOR TO THE STATEMENT OF COMPLIANCE AT THE CONTRACTOR'S EXPENSE AND UNDER THE SUPERVISION OF COGG SUBDIVISIONS ENGINEER OR REPRESENTATIVE

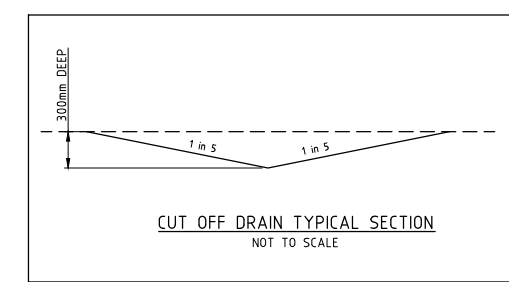
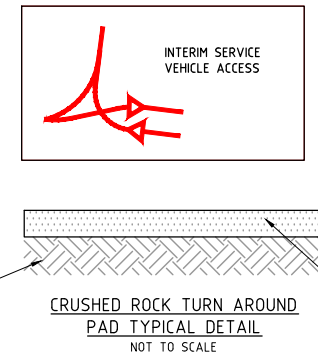
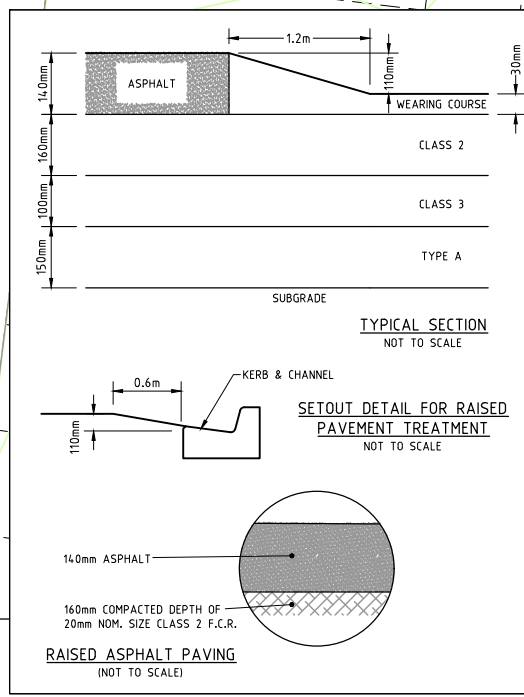
**NOTE** - CO-ORDINATES PROVIDED FOR PITS LOCATED IN FUTURE ROAD RESERVES ARE TO CENTRE OF PIT. CONTRACTOR IS TO ENSURE CORRECT ORIENTATION AND LOCATION IN ACCORDANCE WITH COGG STANDARDS TO FUTURE KERB & CHANNEL.

CROSSOVER WIDTH TO LOT WITH A FRONTAGE OF LESS THAN 12.5m (LOT 9513) IS NOT TO EXCEED 3.3m. ALL OTHER CROSSOVERS TO BE 4m WIDE.

LOT 9513 HELD FROM SAME UNTIL DEVELOPMENT TO WEST IS COMPLETE & REMOVAL OF SERVICE VEHICLE TURN IS APPROVED.

**LEGEND - FUNCTIONAL LAYOUT PLAN**

- ELECTRICITY (UNDERGROUND)
- COMMUNICATIONS
- GAS
- TELSTRA
- WATER
- — STORMWATER DRAIN, PIT & PROPERTY INLET
- SWALE DRAIN
- SEWER & MAINTENANCE STRUCTURES
- HOUSE DRAIN
- SERVICE CONDUITS
- TACTILE PAVERS
- EXISTING ELECTRICITY (UNDERGROUND)
- EXISTING ELECTRICITY (OVERHEAD)
- EXISTING COMMUNICATIONS
- EXISTING GAS
- EXISTING TELSTRA
- EXISTING WATER
- EXISTING STORMWATER DRAIN
- EXISTING SEWER
- EXISTING HOUSE DRAIN
- EXISTING SWALE DRAIN
- ZERO LOT LINES
- PAVEMENT TREATMENT
- DIRECTION OF FALL
- OVERLAND FLOW
- ALLOTMENT TO BE GRADED EVENLY IN DIRECTION OF FALL TO LEVELS INDICATED
- CONCRETE EDGE STRIP WITH SUBSOIL DRAIN, "NO ROAD" SIGN & BARRIER
- LIMIT OF WORKS
- EXISTING TREE TO BE REMOVED



**LOT FILLING**

Where shown on drawings, topsoil will be stripped from lots as part of the construction activity and replaced with fill to meet the finished surface levels. Where obstructions such as trees and rocks are removed fill will be placed back to meet the finished surface levels. Where the fill is greater than 200mm in depth structural fill complying with AS3798-2007 Section 4 Materials is to be used.

**WARNING**  
**BEWARE OF UNDERGROUND SERVICES**

The locations of underground services are approximate only and their exact position should be proven on site. No guarantee is given that all existing services are shown. Locate all underground services before commencement of works

**DIAL 1100 BEFORE YOU DIG**  
www.1100.com.au

REVISION	DATE	DES/DFT	APPD
A	ISSUED TO COUNCIL FOR APPROVAL	26.4.17	BB/BB CB

**Warralily**  
ARMSTRONG CREEK

Principal  
Armstrong Creek Development Corporation  
C/o SMEC Australia Pty Ltd  
Level 1, 47 Pakington Street, Geelong West

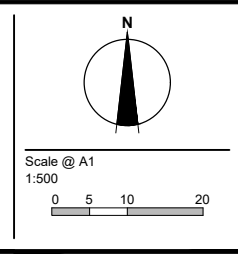
Designed  
B. Barber

Drawn  
B. Barber

Checked  
C. Birkett

Authorised  
S. McGlynn

Date  
March 2017



© SMEC Australia Pty Ltd  
ABN 47 095 475 149

These designs and drawings are the copyright of SMEC Australia Pty Ltd.

The drawing shall not be reproduced or copied, in whole or part, without the written permission of SMEC Australia Pty Ltd.

The contents of this drawing are electronically generated, are confidential and may only be used for the purpose for which they are intended.

**SMEC**

Member of the **Surbana Jurong Group**

**URBAN DEVELOPMENT**  
Level 1, 47 Pakington Street, Geelong West VIC 3218  
p +61 3 5228 3100 | f +61 3 5228 3199 | www.smec.com

**Warralily - Section E**

Stage 95  
City of Greater Geelong  
Roadworks and Drainage  
Functional Layout Plan

Drawing No. **2180E-95-90** Rev A

Sheet No. 1 of 1

**Subject to Approval**  
Not to be used for construction